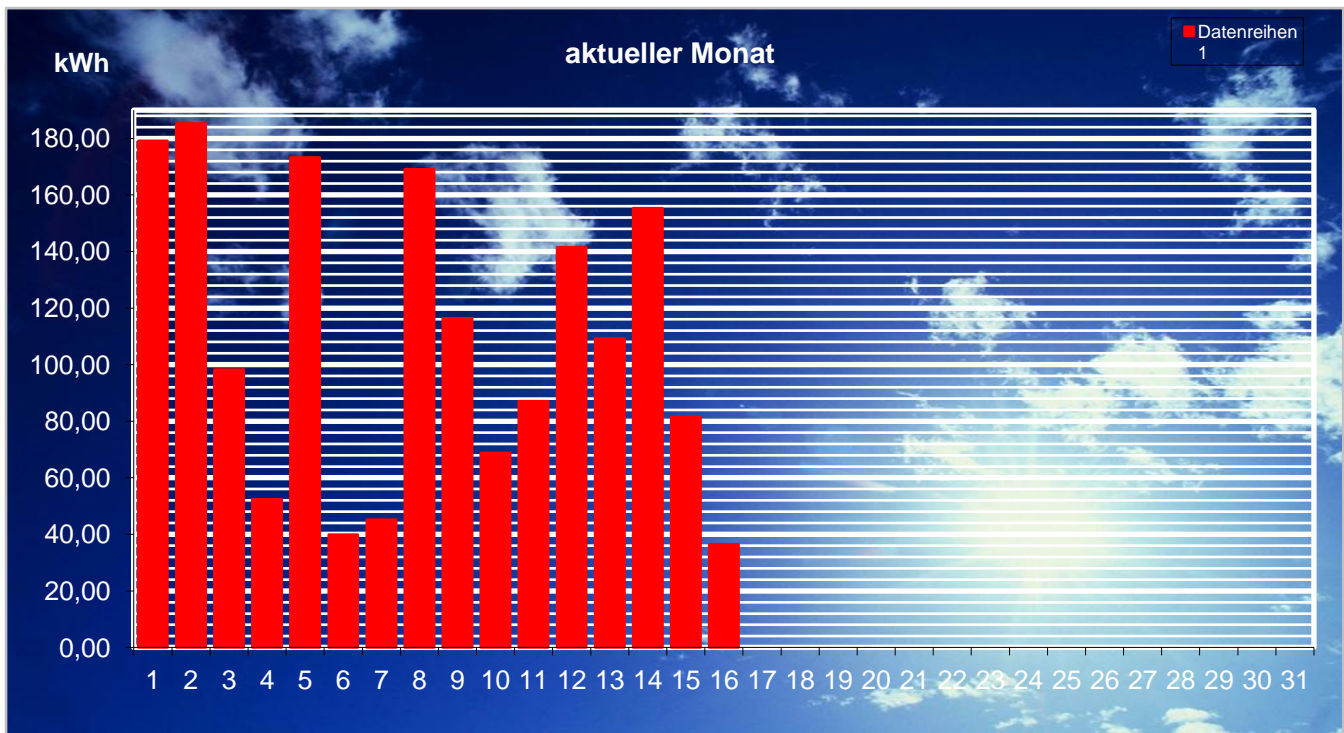


Bürgersolaranlage Westmoor



Monatswerte

	Einspeisung	Vergütung		Einspeisung	Vergütung
Januar 12	502 kWh	235 €	Juli 12	0 kWh	0 €
Februar 12	1.095 kWh	512 €	August 12	0 kWh	0 €
März 12	2.424 kWh	1.133 €	September 12	0 kWh	0 €
April 12	2.931 kWh	1.370 €	Oktober 12	0 kWh	0 €
Mai 12	1.739 kWh	813 €	November 12	0 kWh	0 €
Juni 12	0 kWh	0 €	Dezember 12	0 kWh	0 €

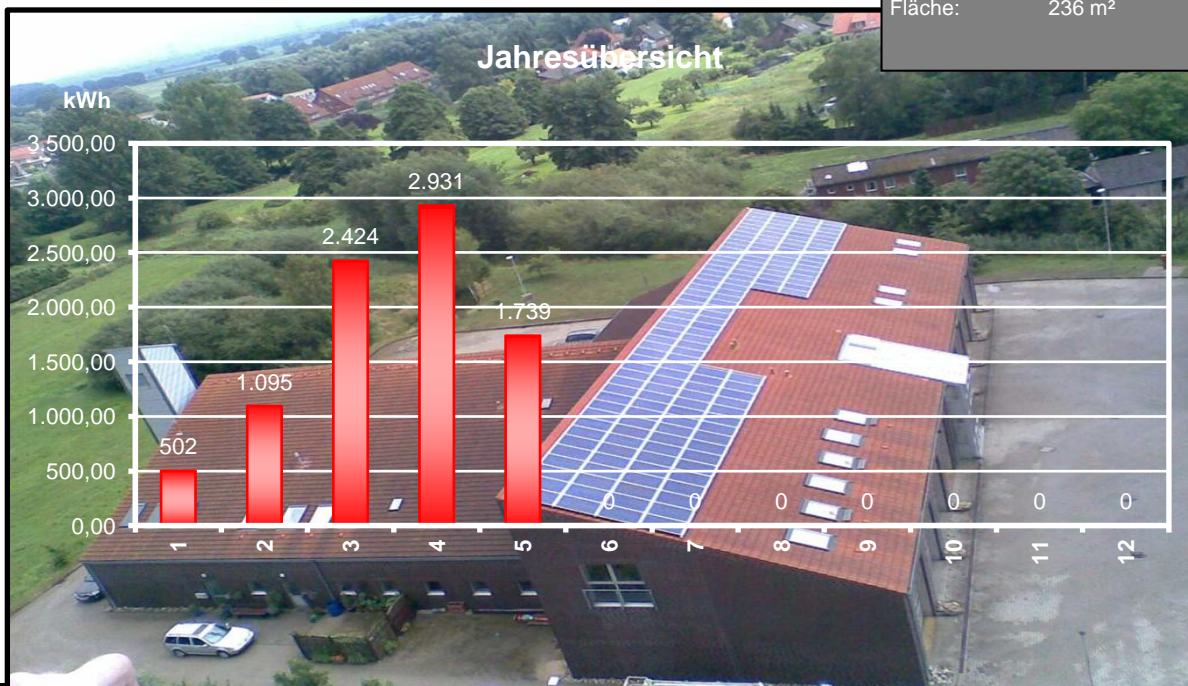
Jahreswerte

	Einspeisung	Vergütung
2011	28.467 kWh	13.309 €
2012	8.691 kWh	4.063 €

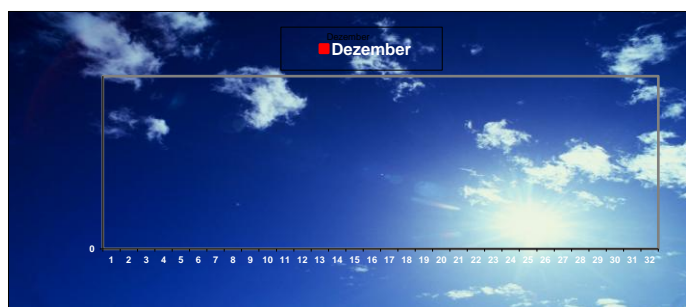
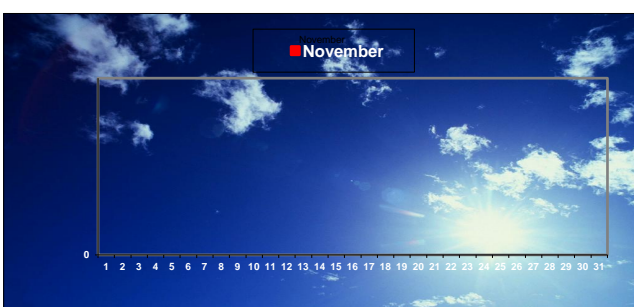
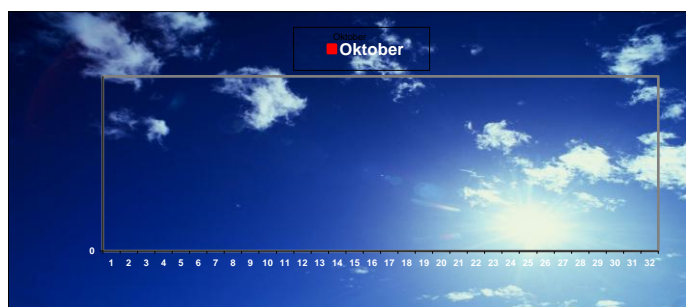
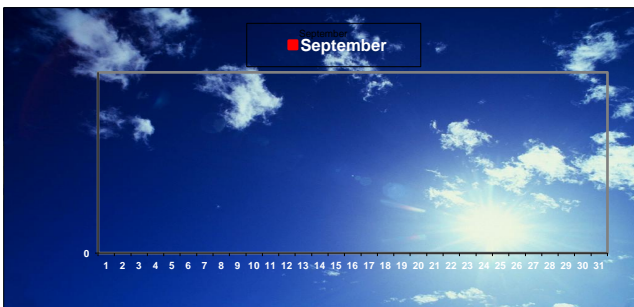
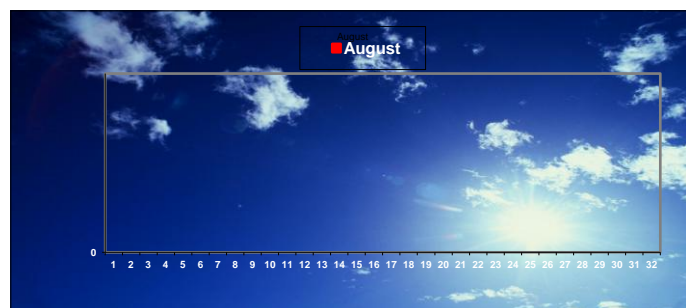
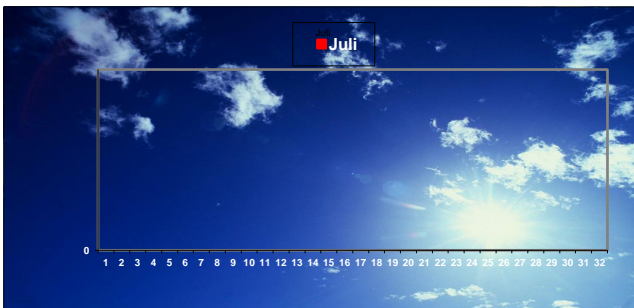
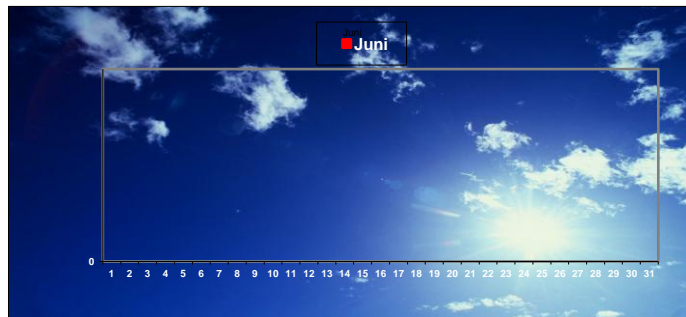
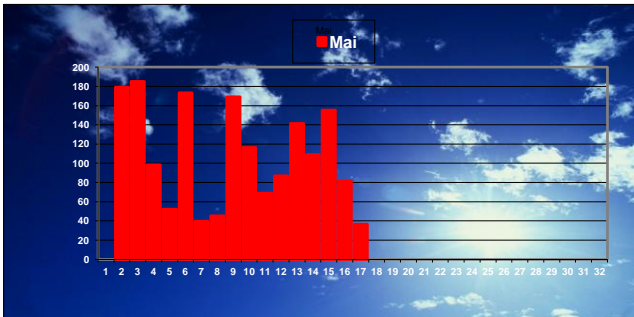
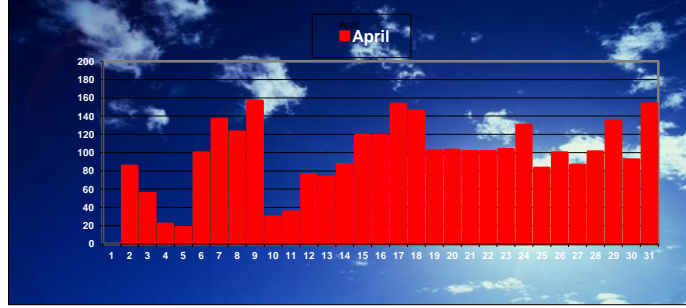
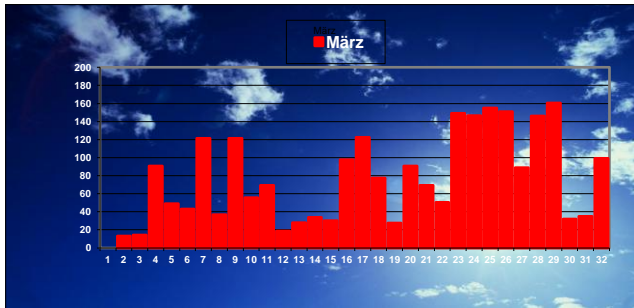
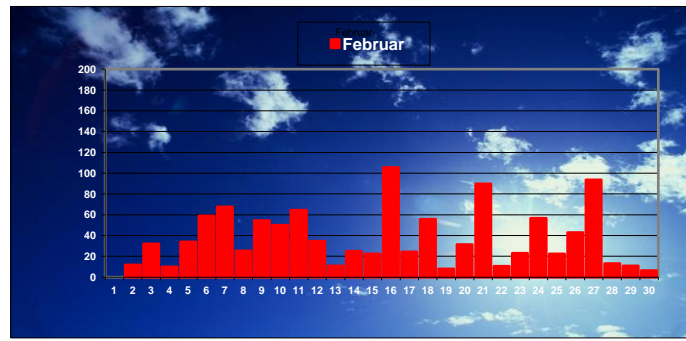
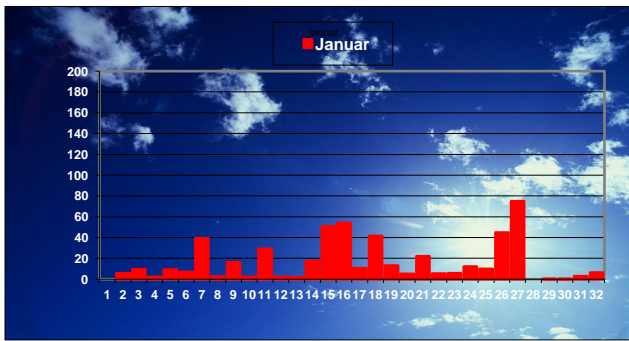
Technische Daten:

Leistung: 30 kWp
 Module: 158 Stck.
 Typ: Evergreen 190Wp
 Wechselrichter: 4 x Solarmax 6000S
 2 x Solarmax 4200S
 Fläche: 236 m²

Jahresübersicht



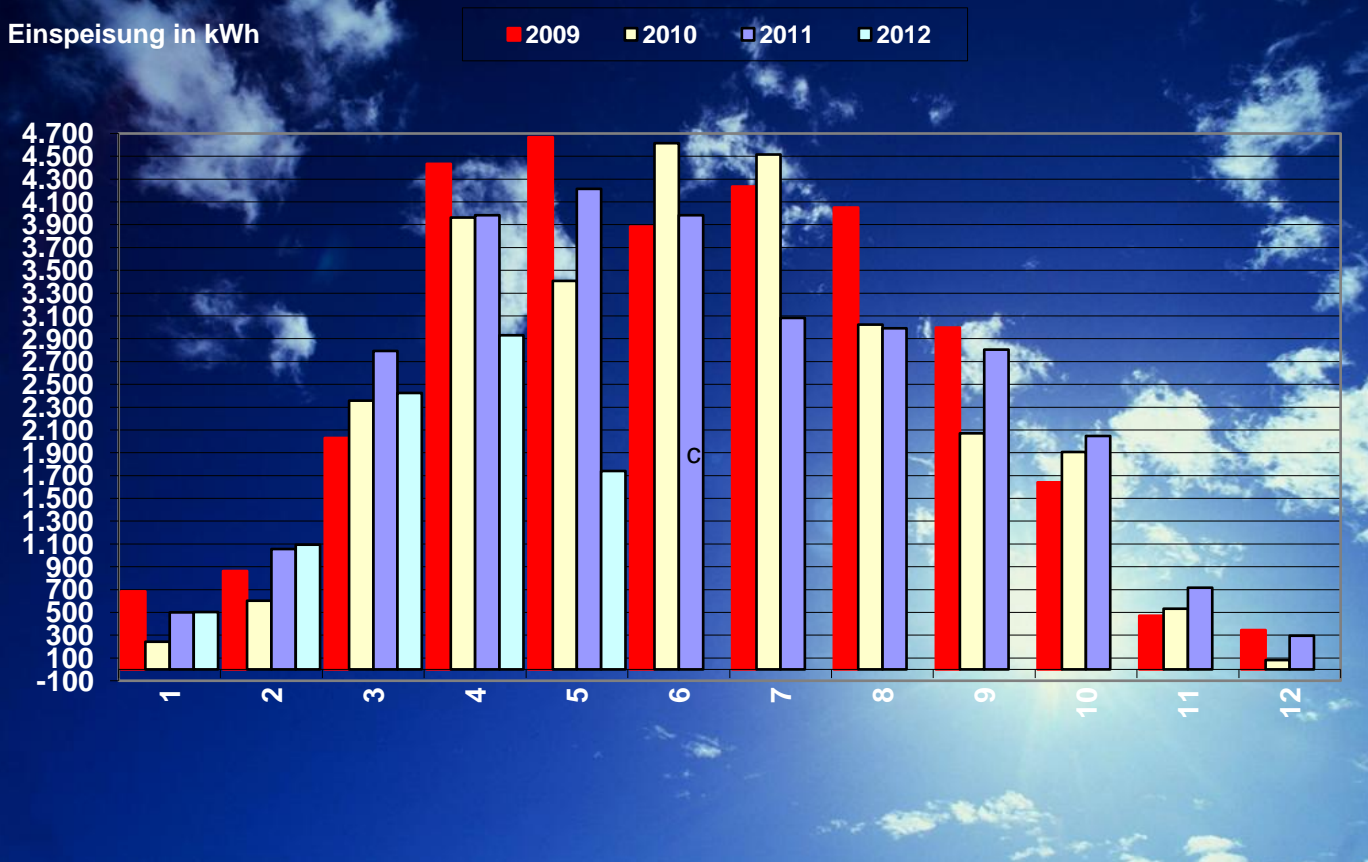
Bürgersolaranlage Westmoor -Monatsübersicht-



Bürgersolaranlage Westmoor

-Jahresübersicht-

Einspeisung in kWh



Erträge in €

