

## Monatswerte\*

	Einspeisung	Vergütung		Einspeisung	Vergütung
Januar 12	201 kWh	94 €	Juli 12	0 kWh	0 €
Februar 12	268 kWh	125 €	August 12	0 kWh	0 €
März 12	1.069 kWh	500 €	September 12	0 kWh	0 €
April 12	1.370 kWh	641 €	Oktober 12	0 kWh	0 €
Mai 12	817 kWh	382 €	November 12	0 kWh	0 €
Juni 12	0 kWh	0 €	Dezember 12	0 kWh	0 €

\*Gesamtwerte beider Anlagen

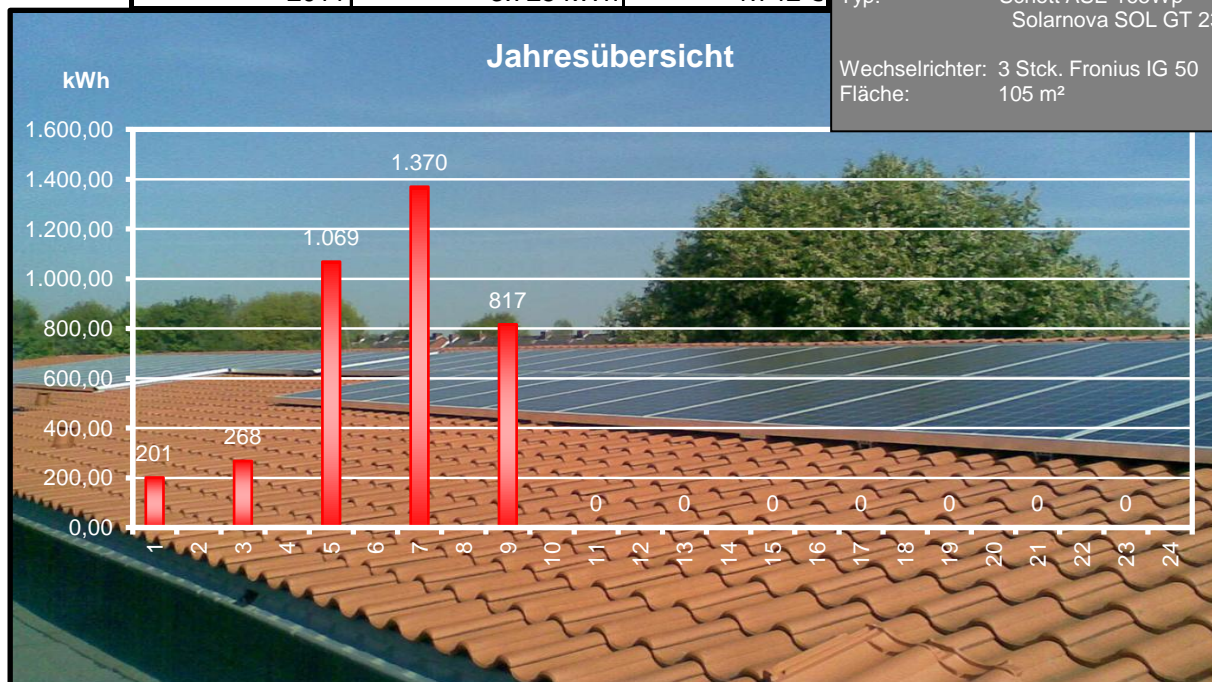
## Jahreswerte\*

	Einspeisung	Vergütung
2010	12.730 kWh	5.951 €
2011	3.725 kWh	1.742 €

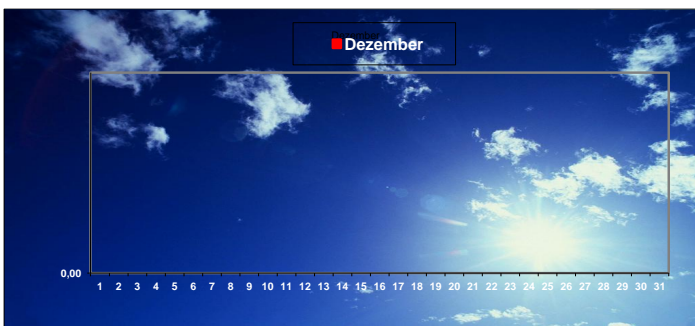
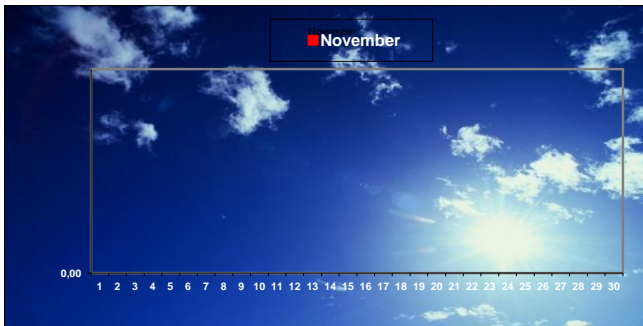
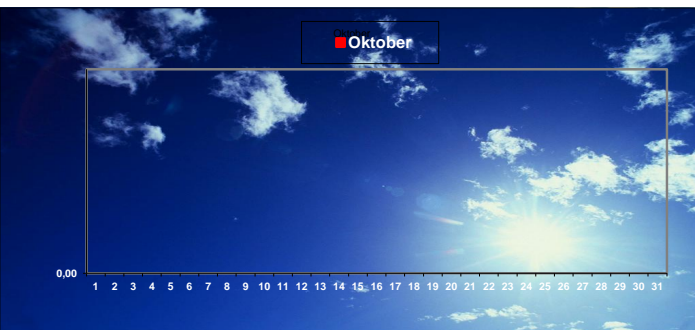
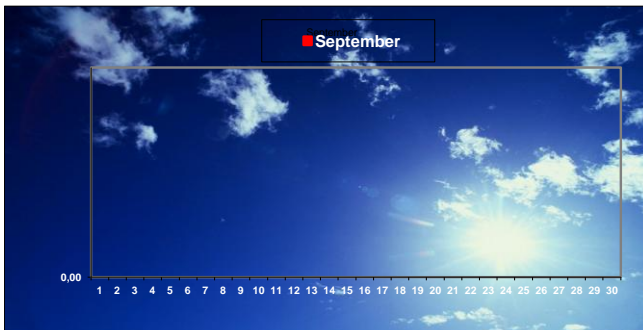
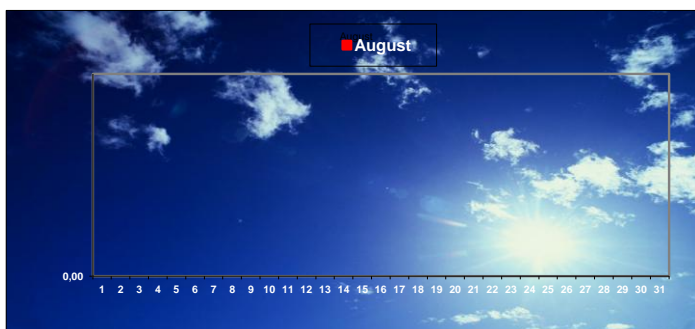
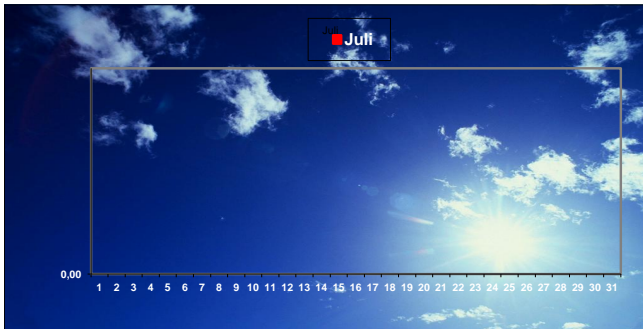
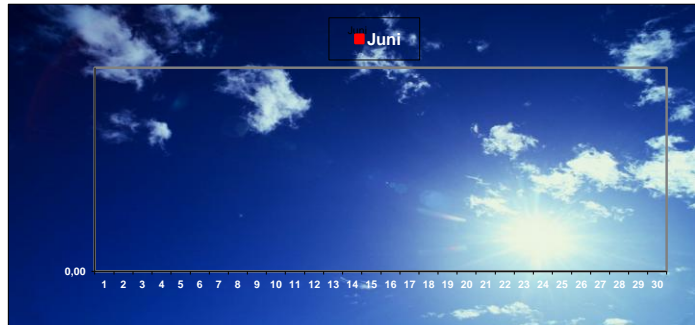
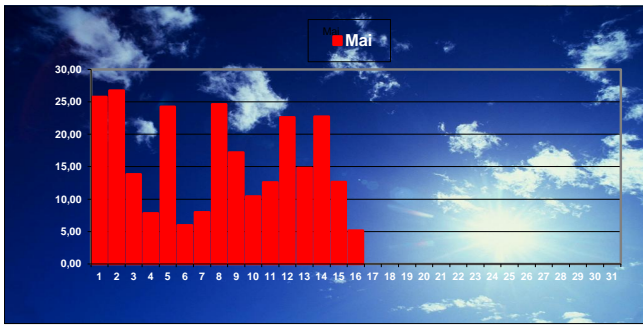
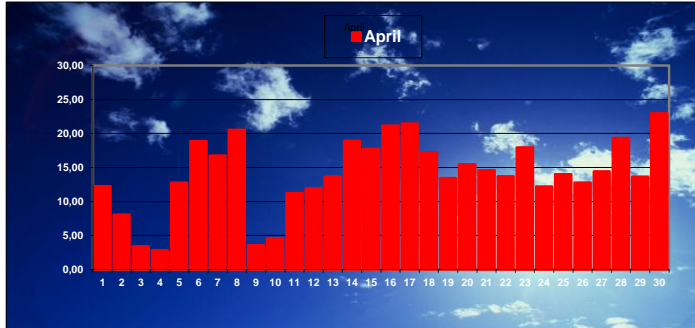
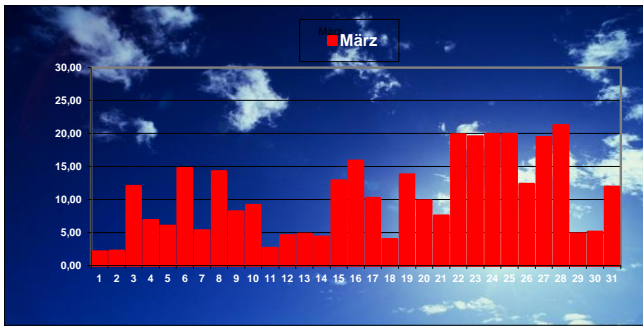
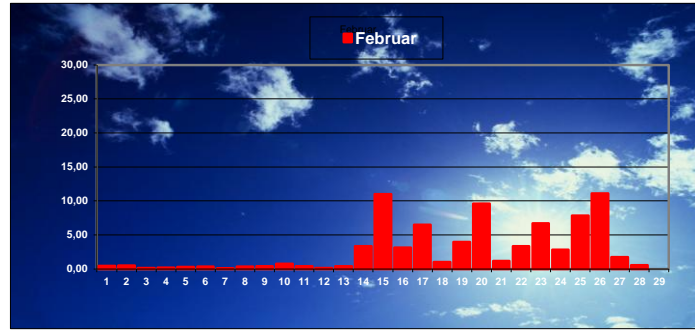
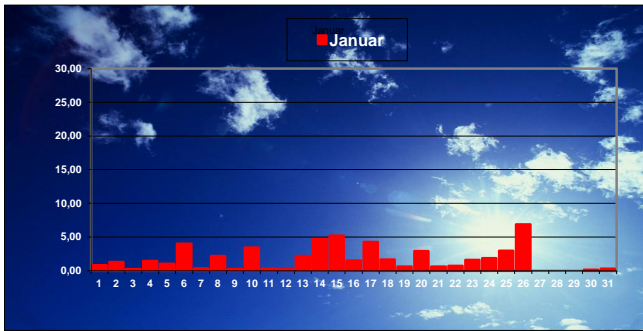
## Technische Daten:

Es sind zwei baugleiche Anlagen installiert.  
 Leistung: 4,45 kWp & 9,67 kWp [14,12 kWp]  
 Module: 27 & 51 Stck. [78 Stck.]  
 Typ: Schott ASE 165Wp  
 Solarnova SOL GT 230 Wp

Wechselrichter: 3 Stck. Fronius IG 50  
 Fläche: 105 m<sup>2</sup>

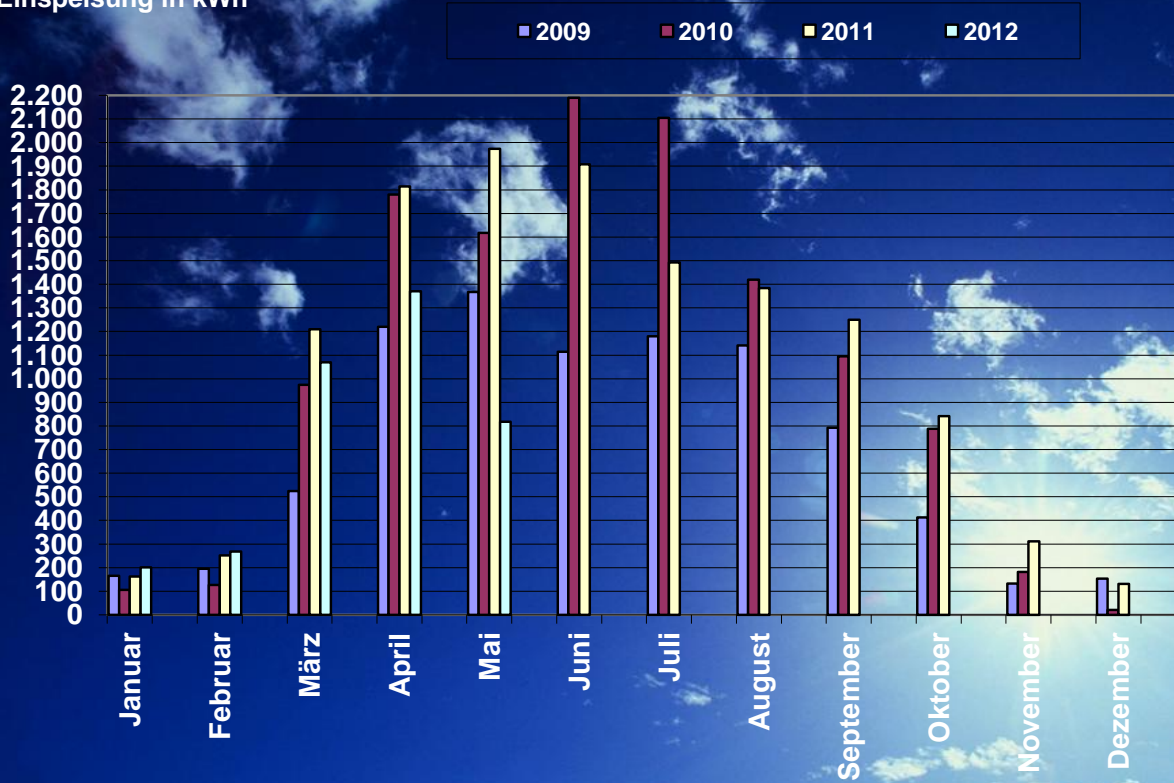


# Solaranlagen Realschule Süd -Monatsübersicht-



# Solaranlagen Realschule Süd -Jahresübersicht-

Einspeisung in kWh



Erträge in €

