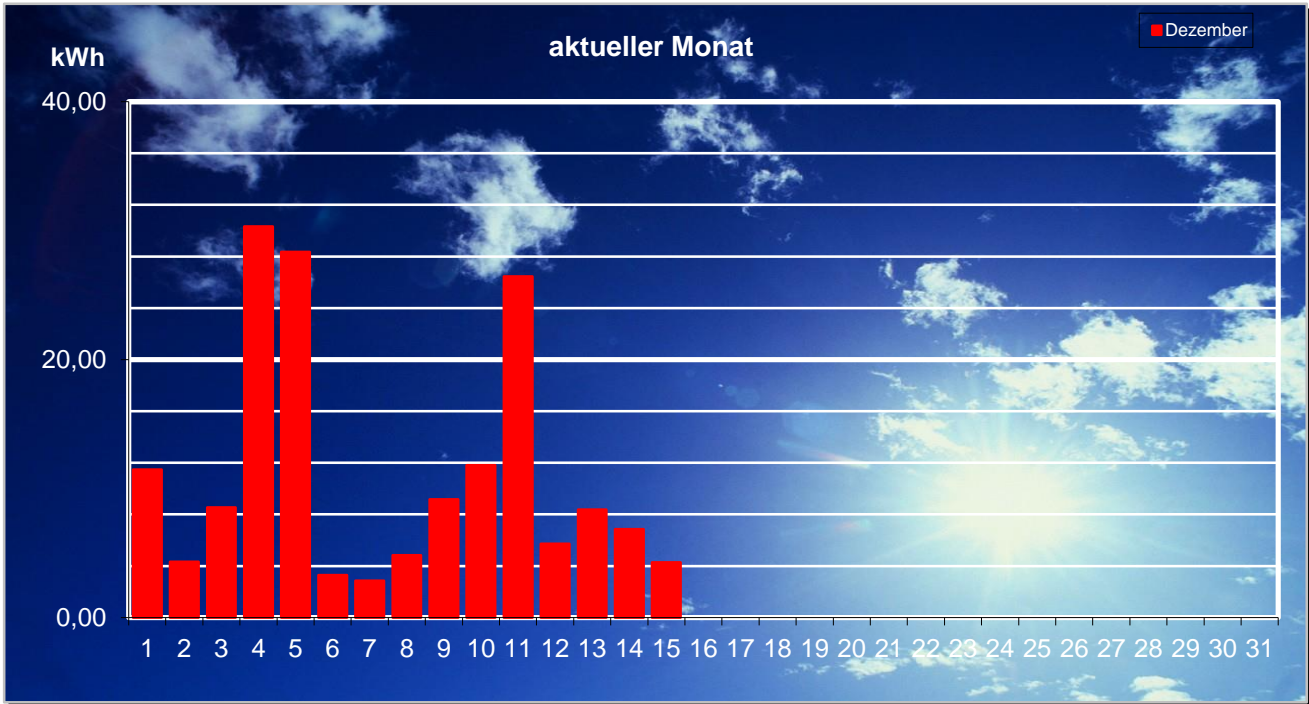


# Bürgersolaranlage Westmoor



## Monatswerte

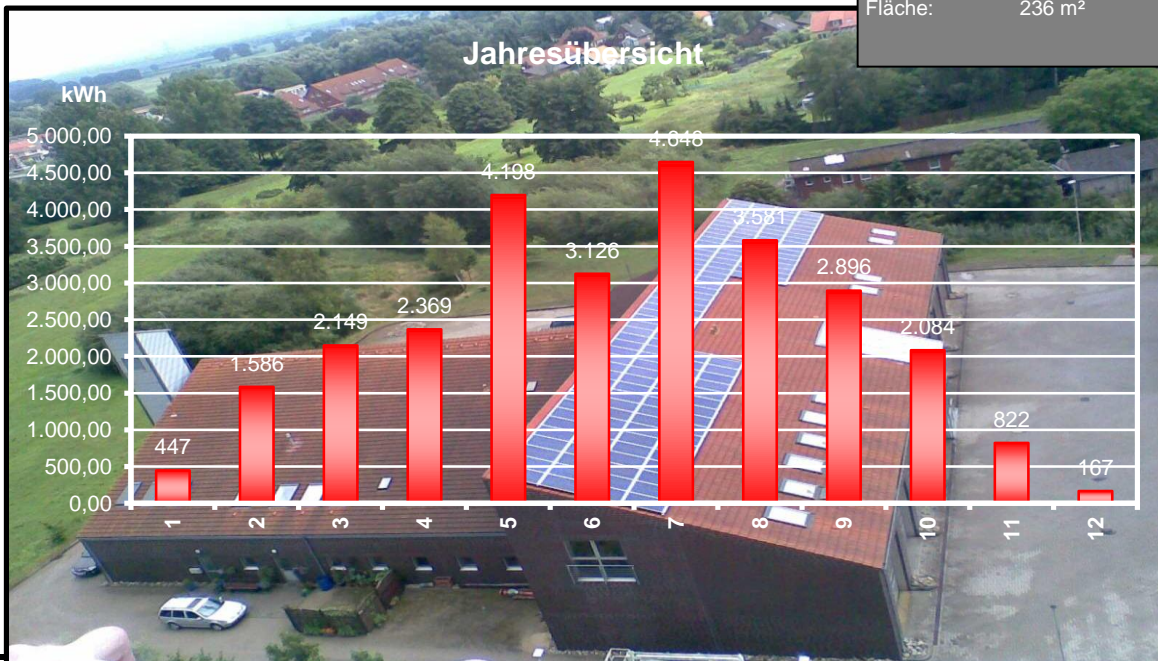
	Einspeisung	Vergütung		Einspeisung	Vergütung
Januar 18	447 kWh	209 €	Juli 18	4.648 kWh	2.173 €
Februar 18	1.586 kWh	741 €	August 18	3.581 kWh	1.674 €
März 18	2.149 kWh	1.005 €	September 18	2.896 kWh	1.354 €
April 18	2.369 kWh	1.107 €	Oktober 18	2.084 kWh	974 €
Mai 18	4.198 kWh	1.963 €	November 18	822 kWh	384 €
Juni 18	3.126 kWh	1.461 €	Dezember 18	167 kWh	78 €

## Jahreswerte

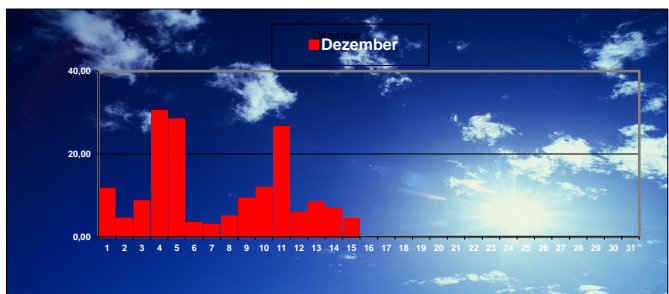
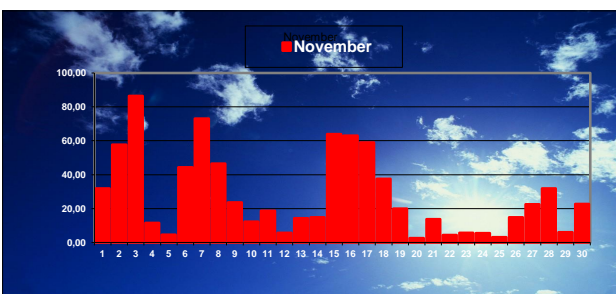
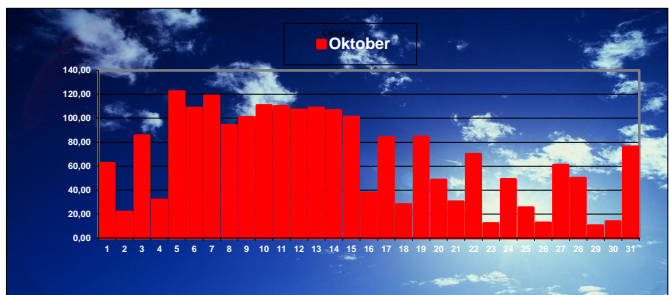
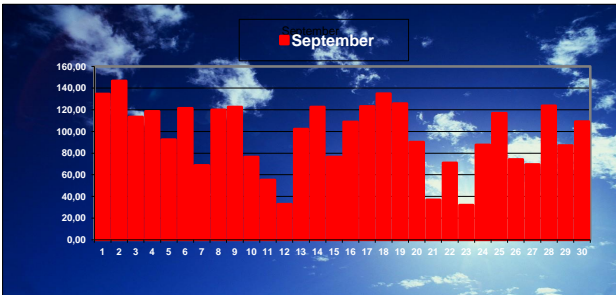
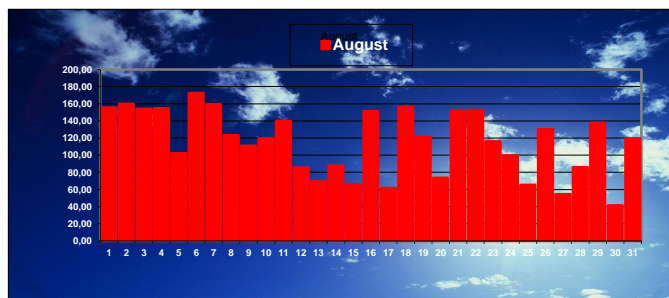
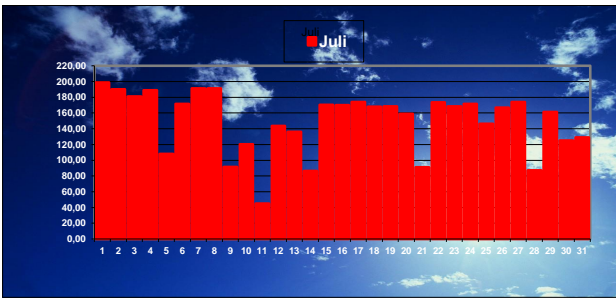
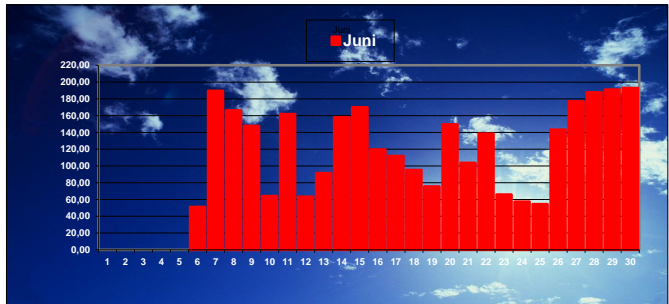
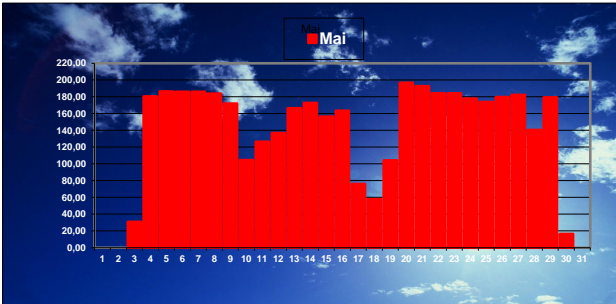
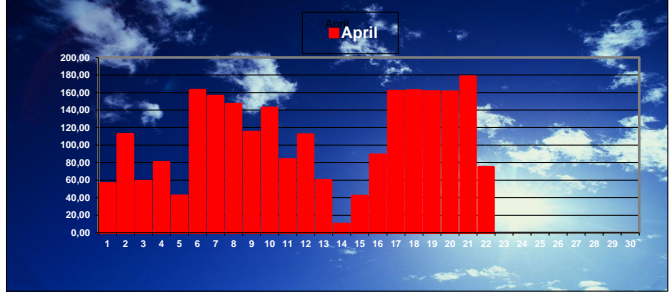
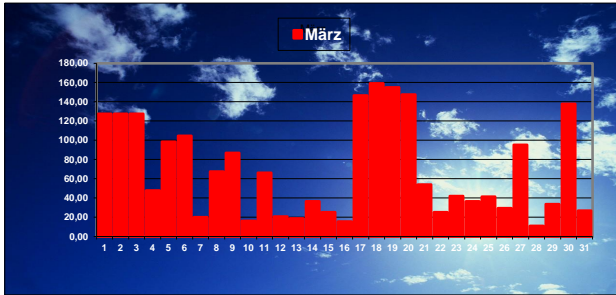
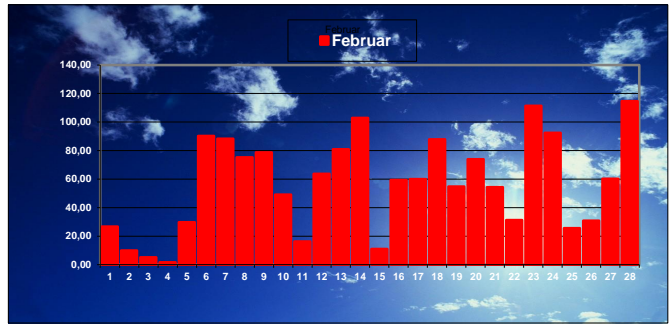
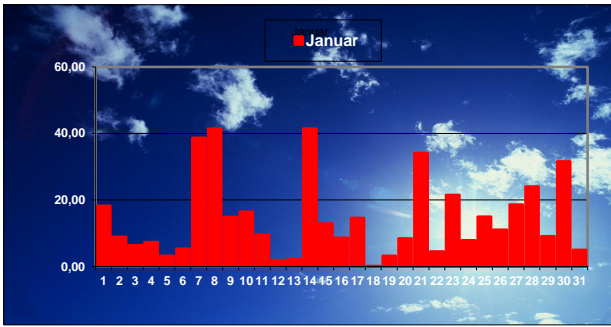
	Einspeisung	Vergütung
2016	26.947 kWh	12.598 €
2017	25.804 kWh	12.064 €

## Technische Daten:

Leistung: 30 kWp  
 Module: 158 Stck.  
 Typ: Evergreen 190Wp  
 Wechselrichter: 4 x Solarmax 6000S  
 2 x Solarmax 4200S  
 Fläche: 236 m<sup>2</sup>



# Bürgersolaranlage Westmoor -Monatsübersicht-





# Bürgersolaranlage Westmoor

## -Jahresübersicht-

